

# Norfolk and Waveney Prostate Cancer Support Group

PSA Testing Sessions Results Analysis

Norwich

March 2009

Gt Yarmouth

September 2009

Fakenham

October 2010

## PSA Testing Sessions Results

NORWICH	40-44	45-49	50-54	55-59	60-64	65-69	70-74	75-79	80-84	85-89	No tested	March 2009
Green letters											188	
Amber letters											16	
Red letters		1	2	1	2	5	2	1	1		15	6
<b>Total</b>	2	9	22	22	54	53	40	13	3	1	219	

Personal Feedback confirmed cancers **40%**  
to date

GT. YARMOUTH	40-44	45-49	50-54	55-59	60-64	65-69	70-74	75-79	80-84	85-89	No tested	October 2009
Green letters											188	
Amber letters											6	
Red letters				1	2	6	1	1			11	5
<b>Total</b>		5	29	28	59	42	32	10			205	

Personal Feedback confirmed cancers **45%**  
to date

FAKENHAM	40-44	45-49	50-54	55-59	60-64	65-69	70-74	75-79	80-84	85-89	No tested	September 2010
Green letters											187	
Amber letters											10	
Red letters			2	3	3	4	3	3	2	1	21	8
<b>Total</b>		18	21	31	43	47	29	23	5	1	218	

Personal Feedback confirmed cancers **38%**  
to date

COMBINED TOTALS	40-44	45-49	50-54	55-59	60-64	65-69	70-74	75-79	80-84	85-89	No tested	
Green letters											563	
Amber letters											32	
Red letters		1	4	5	7	15	6	5	3	1	47	19
<b>Total</b>	2	32	72	81	156	142	101	46	8	2	642	

Personal Feedback confirmed cancers **40%**  
to date

## PSA Testing Sessions Results

Total Reds	40-44	45-49	50-54	55-59	60-64	65-69	70-74	75-79	80-84	85-89	No tested		
NORWICH		1	2	1	2	5	2	1	1		15	6	Personal Feedback confirmed cancers
GT. YARMOUTH				1	2	6	1	1			11	5	Personal Feedback confirmed cancers
FAKENHAM			2	3	3	4	3	3	2	1	21	8	Personal Feedback confirmed cancers
<b>Total</b>		<b>1</b>	<b>4</b>	<b>5</b>	<b>7</b>	<b>15</b>	<b>6</b>	<b>5</b>	<b>3</b>	<b>1</b>	<b>47</b>	<b>19</b>	<b>40%</b> of reds confirmed as cancer cases

Total Ambers	40-44	45-49	50-54	55-59	60-64	65-69	70-74	75-79	80-84	85-89	No tested
NORWICH											16
GT. YARMOUTH											6
FAKENHAM											10
<b>Total</b>											<b>32</b>

	No tested	
Green	188	86%
Amber	16	7%
Red	15	7%
<b>NORWICH</b>	<b>219</b>	

Total Greens	40-44	45-49	50-54	55-59	60-64	65-69	70-74	75-79	80-84	85-89	No tested
NORWICH											188
GT. YARMOUTH											188
FAKENHAM											187
<b>Total</b>											<b>563</b>

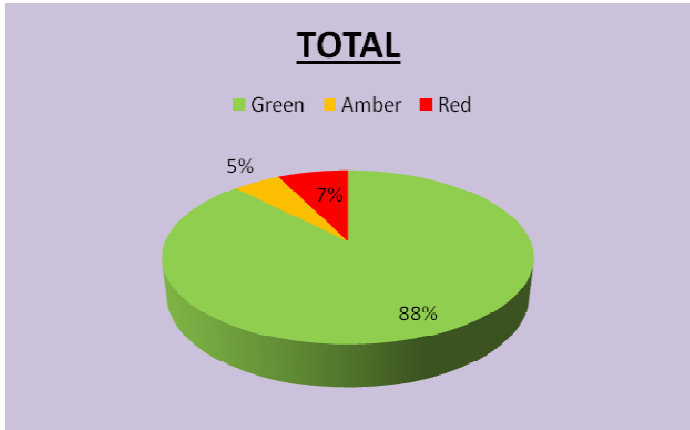
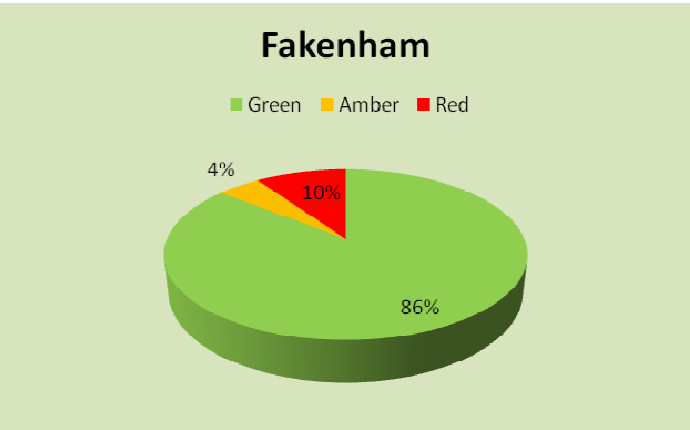
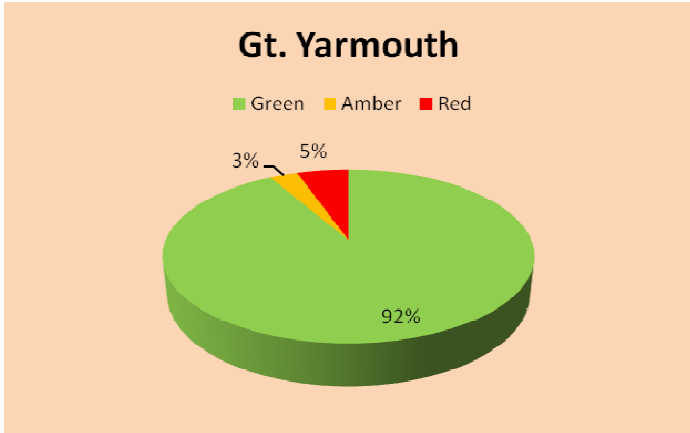
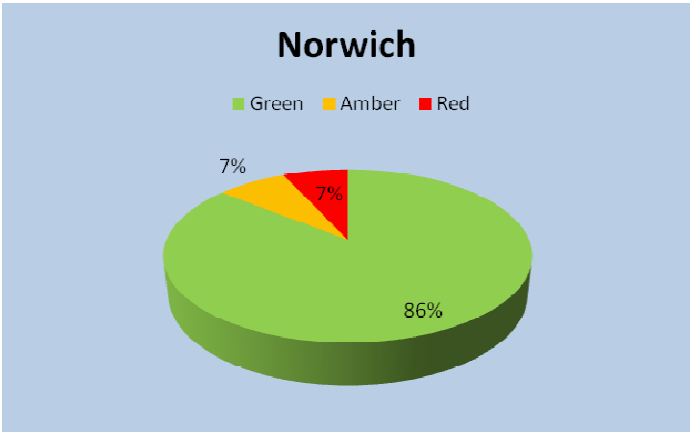
	No tested	
Green	188	92%
Amber	6	3%
Red	11	5%
<b>GT. YARMOUTH</b>	<b>205</b>	

Total Tested	40-44	45-49	50-54	55-59	60-64	65-69	70-74	75-79	80-84	85-89	No tested
NORWICH	2	9	22	22	54	53	40	13	3	1	219
GT. YARMOUTH		5	29	28	59	42	32	10			205
FAKENHAM		18	21	31	43	47	29	23	5	1	218
<b>Total</b>	<b>2</b>	<b>32</b>	<b>72</b>	<b>81</b>	<b>156</b>	<b>142</b>	<b>101</b>	<b>46</b>	<b>8</b>	<b>2</b>	<b>642</b>
<b>REDS</b>		<b>1</b>	<b>4</b>	<b>5</b>	<b>7</b>	<b>15</b>	<b>6</b>	<b>5</b>	<b>3</b>	<b>1</b>	<b>47</b>
REDS % of total	0%	3%	6%	6%	4%	11%	6%	11%	38%	50%	7%

	No tested	
Green	187	86%
Amber	10	5%
Red	21	10%
<b>FAKENHAM</b>	<b>218</b>	

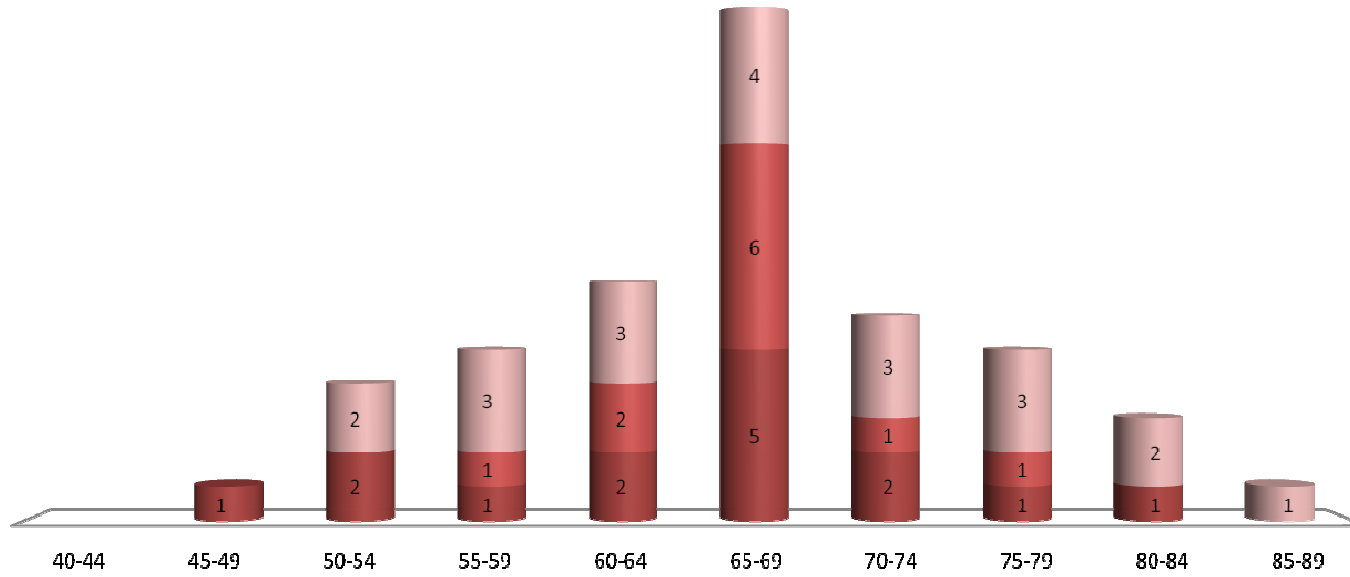
	No tested	
Green	563	88%
Amber	32	5%
Red	47	7%
<b>TOTAL</b>	<b>642</b>	

Percentages



## Reds

■ NORWICH   
 ■ GT. YARMOUTH   
 ■ FAKENHAM



Age Group	40-44	45-49	50-54	55-59	60-64	65-69	70-74	75-79	80-84	85-89	TOTAL
<b>Numbers</b>		1	4	5	7	15	6	5	3	1	<b>47</b>

## Confirmed Cancers and Treatments Advised

Confirmed Cancers	
<b>NORWICH</b>	<b>6</b>
<b>GT. YARMOUTH</b>	<b>5</b>
<b>FAKENHAM</b>	<b>8</b>
Total	19

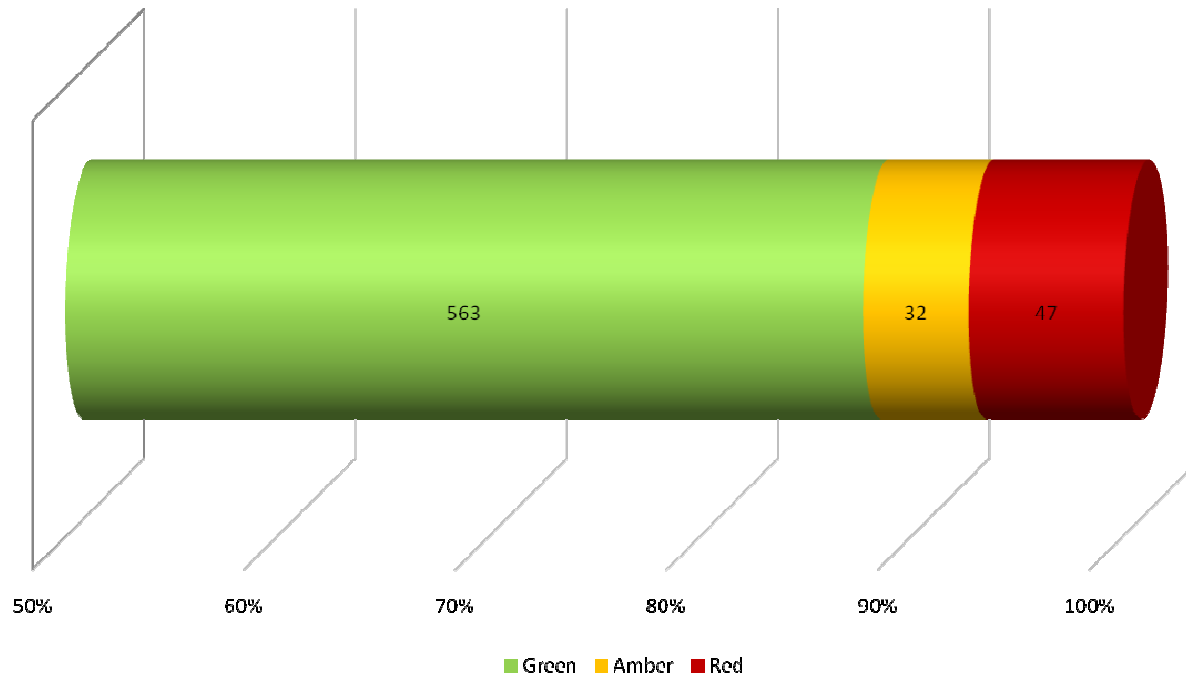
Likely to rise in due course

Norwich	Total	Ages		
Radical Prostatectomy	3	48	54	65
Radiotherapy	1	50		
H.I.F.U	1	62		
Active Surveillance	1	81		
<i>Refused testing by GP</i>		<i>Not Available</i>		
<i>Relative prostate cancer</i>				

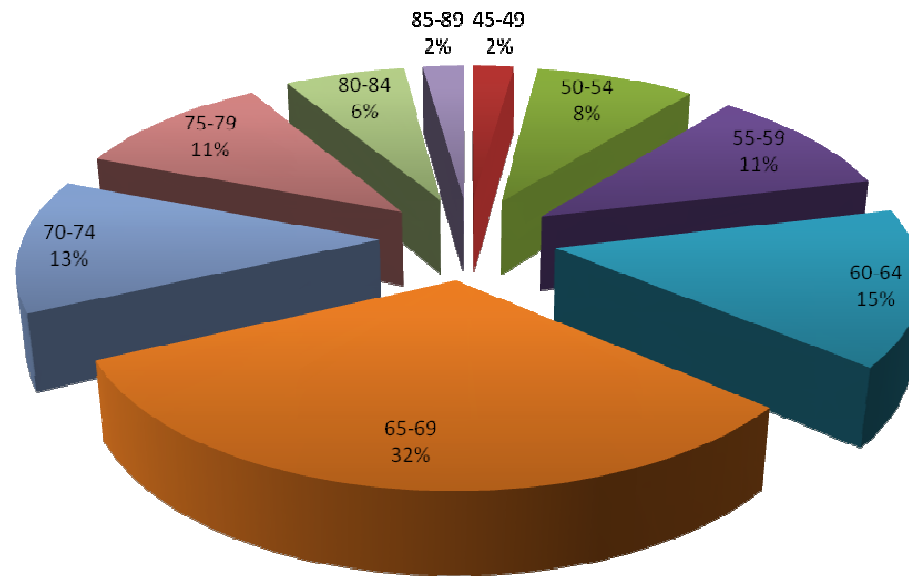
Gt. Yarmouth	Total	Ages		
Radical Prostatectomy	3	59	61	67
Radiotherapy	1	68		
H.I.F.U				
Active Surveillance	1	70		
<i>Refused testing by GP</i>	7	<i>Not Available</i>		
<i>Relative prostate cancer</i>	31			

Fakenham	Total	Ages		
Radical Prostatectomy		<i>Not Available</i>		
Radiotherapy				
H.I.F.U				
Active Surveillance				
<i>Refused testing by GP</i>	5			
<i>Relative prostate cancer</i>	32			

### Distribution of those tested



### Age Range Distribution of 'Reds'

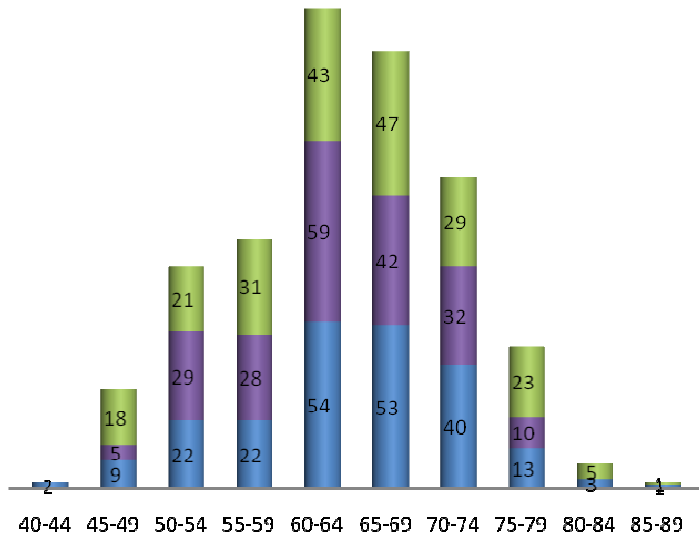




Comparison of Age Ranges Tested, against Red results.

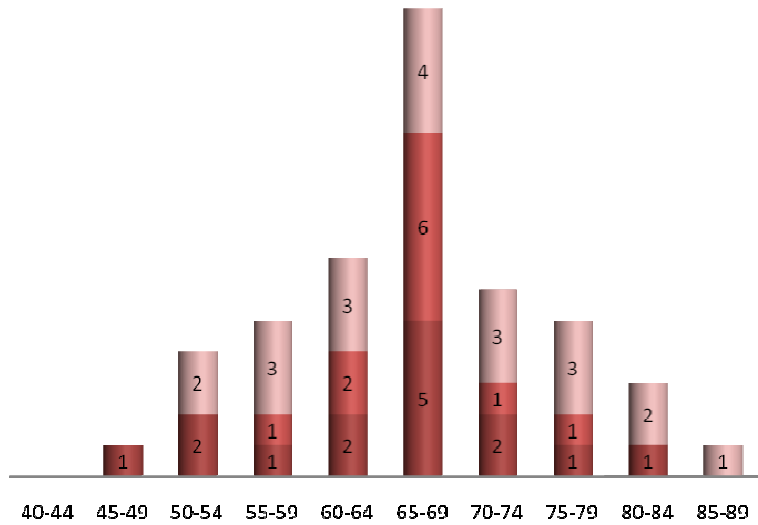
**Age Distribution of Those Tested**

■ NORWICH ■ GT. YARMOUTH ■ FAKENHAM



**Age Distribution of Red Results**

■ NORWICH ■ GT. YARMOUTH ■ FAKENHAM



TOTAL	2	32	72	81	156	142	101	46	8	2	642
REDS		1	4	5	7	15	6	5	3	1	47
	0%	3%	6%	6%	4%	11%	6%	11%	38%	50%	7%

## Residential Location of all Those Tested.

Residing In	
Acle	1
Ashwellhorpe	1
Attleborough	7
Aylsham	2
Aylsham	4
Beccles	4
Beccles	2
Brisley	1
Briston	1
Bungay	2
Coltishall	3
Colton	1
Cromer	5
Dereham	37
Dilham	1
Diss	4
Drayton	2
Fakenham	57
Great Hockham	1
Great Yarmouth	113
Harleston	1
Hembsy	1
Hethel	1
Hetherscott	1
Hievingham	1
Hindolveston	1
Holt	12
Horning	2
Horsford	1
Hunstanton	2

KingsLynn	23
Langham	1
Little Plumstead	1
Lowestoft	16
Ludham	1
Lynn	1
Marlingford	1
Milton Constable	5
N. Walsham	8
New Costessey	1
Norwich	259
Paston	1
Rackheath	1
Roughton	1
Saxmundham	1
Scratby	1
Sheringham	8
Smallburgh	2
Swaffham	7
Thetford	7
Thurston	1
Walsingham	1
Walton	1
Welbourne	1
Wells	5
West Runton	1
Wood Norton	1
Worstoad	1
Wroxham	1
Wymondham	11
TOTAL	642

## Norwich Data

		The age-ranges of those tested										
<b>NORWICH</b>	No tested	40-44	45-49	50-54	55-59	60-64	65-69	70-74	75-79	80-84	85-89	
March 2009	219	2	9	22	22	54	53	40	13	3	1	
Green	188	Age Distribution not provided by D B-S										Personal Feedback Confirmed Cancers
Amber	16	Age Distribution not provided by D B-S										
Red	15	1	2	1	2	5	2	1	1	1	6	

Residing In	
Ashwellthorpe	1
Attleborough	6
Aylsham	2
Beccles	4
Bungay	1
Coltishall	2
Colton	1
Cromer	2
Dereham	9
Diss	2
Drayton	1
Fakenham	1
Great Yarmouth	1
Harleston	1
Holt	3
Horsford	1
Hunstanton	1
Little Plumstead	1
Lowestoft	2

Ludham	1
Marlingford	1
N. Walsham	3
New Costessey	1
Norwich	144
Paston	1
Rackheath	1
Saxmundham	1
Sheringham	4
Smallburgh	2
Swaffham	2
Thetford	4
Thurston	1
Watton	1
Welbourne	1
West Runton	1
Wood Norton	1
Wymondham	7
Total	219

## Gt. Yarmouth Data

GT. YARMOUTH October 2009	No tested 205	The age-ranges of those tested										
		40-44	45-49	50-54	55-59	60-64	65-69	70-74	75-79	80-84	85-89	
		0	5	29	28	59	42	32	10	0	0	
Green	188	Age Distribution not provided by D B-S										Personal Feedback Confirmed Cancers
Amber	6	Age Distribution not provided by D B-S										
Red	11				1	2	6	1	1			

Residing In	
Acle	1
Beccles	2
Bungay	1
Cromer	1
Dilham	1
Drayton	1
Great Yarmouth	111
Hemsby	1
Hevingham	1
Horning	1
Lowestoft	14
Lyng	1
Norwich	64
Scratby	1
Worstead	1
Wymondham	3
Total	205

## Fakenham Data

<b>FAKENHAM</b>	No tested	40-44	45-49	50-54	55-59	60-64	65-69	70-74	75-79	80-84	85-89
September 2010	<b>218</b>	0	18	21	31	43	47	29	23	5	1

Green	187	Age Distribution not provided by D B-S										Personal Feedback Confirmed Cancers
Amber	10	Age Distribution not provided by D B-S										
Red	21	0	0	2	3	3	4	3	3	2	1	

32 declared a family history of prostate cancer

5 said they had been refused a PSA test by GP

Residing In	
Attleborough	1
Aylsham	4
Brisley	1
Briston	1
Coltishall	1
Cromer	2
Dereham	28
Diss	2
Fakenham	56
Great Hockham	1
Great Yarmouth	1
Hethel	1
Hethersett	1
Hindolveston	1
Holt	9

Horning	1
Hunstanton	1
Kings Lynn	23
Langham	1
Melton Constable	5
N. Walsham	5
Norwich	51
Roughton	1
Sheringham	4
Swaffham	5
Thetford	3
Walsingham	1
Wells	5
Wroxham	1
Wymondham	1
<b>Total</b>	<b>218</b>